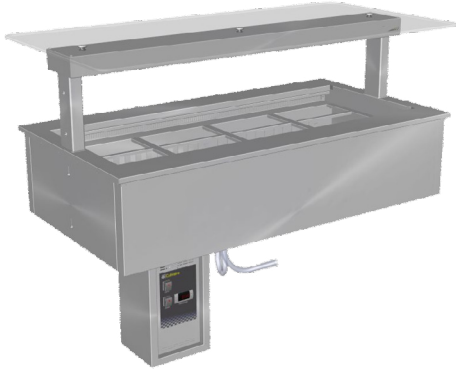


CR.CWCF.D.RB.GSF.3

Refrigerated Well Counter Line

Drop-in Remote



Product Information:

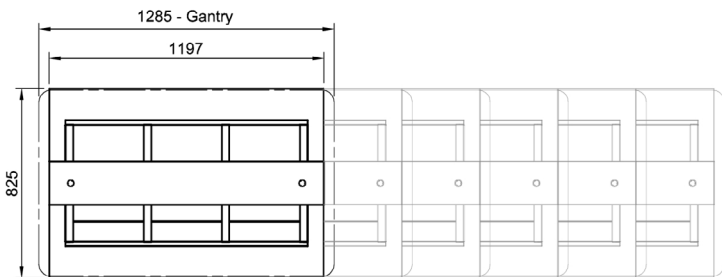
- This display is designed to be installed into a cut out in a new or existing bench top which allows for simple installation
- Adjustable digital temperature controller allows food to be held between +2°C to +4°C in a maximum of 32°C ambient temperature
- The blown air design passes cold air over and under the food pans creating an even cooling effect
- Fitted with a stainless steel gantry support frame and light surround
- 10mm toughened flat glass gantry fitted with high impact, low energy L.E.D. lighting
- Fully insulated and constructed from 304 grade stainless steel with a No.4 finish
- Supplied with a control box for connection to a remote condenser unit to be supplied & fitted by others and connected by a qualified refrigeration contractor and electrician
- Fitted with condensate drain hose for connection to waste
- Suits gastronorm pans up to 100mm deep (sold separately)

Product Code:

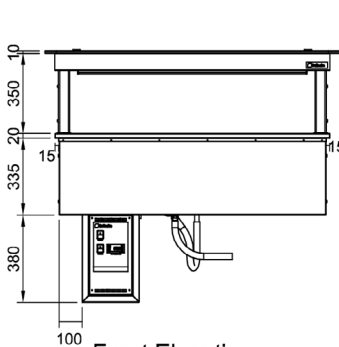
CR	= Culinaire Refrigerated
CWCF	= Cold Well - Counter Line - Fan Forced
D	= Drop-in
RB	= Remote Control Box
GSF	= Flat Glass Gantry - Stainless Steel Fixings
3	= 3 Modules

Technical Data:

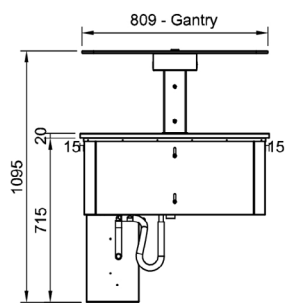
Dimensions: W x D x H:	1197 x 825 x 1095
Cutout Dimensions:	1180 x 805
* Remote Refrigeration Load:	719 watts at -10°C SST
Refrigerant Type:	R507 or 404A
Pipe Connection Inlet	1/2"
Pipe Connection Outlet	1/4"
Total Connected Load:	0.12kW
Electrical Connection:	10A plug & lead fitted



Plan View



Front Elevation



End Elevation

Note: Refrigeration load is calculated at the cabinet



Proudly Manufactured
in Australia

Due to continuous product research and development, the information contained herein is subject to change without notice

Manufactured By:

Tom Stoddart Pty Ltd. ABN 16 009690251
39 Forest Way, Karawatha 4117 Queensland Australia
Tel : +61 7 3440 7600 Fax : +61 7 33441000
Web site: www.stoddart.com.au